

Ekahau Site Survey Quick Guide



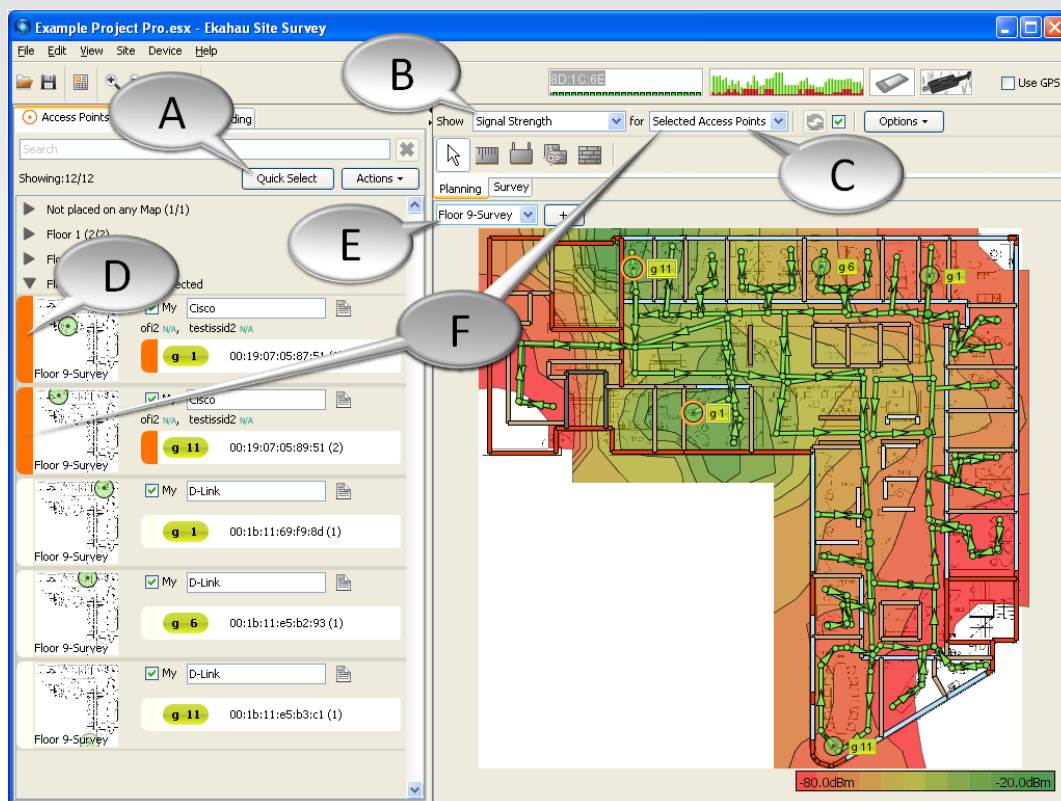
Install Ekahau Site Survey

1. Ensure you have a supported network adapter in your computer. See www.ekahau.com/devices. You'll need two Wi-Fi adapters for Hybrid Surveys.
2. Click on the installer executable
3. Follow the on-screen installation instructions
4. When starting the SW, insert the license key and choose a network adapter to tie the license key to. If you do not have a license key, you can start ESS in evaluation mode.

Check Out the Example Project

The easiest way to get familiar with ESS is to explore the example project. It includes one floor of surveyed data and two floors of simulated data.

1. Project: File > Open, select one of the example projects
2. Try different visualizations (B) and AP selections (C, D, F, A)
3. With Example Project Pro, move, add and reconfigure access points

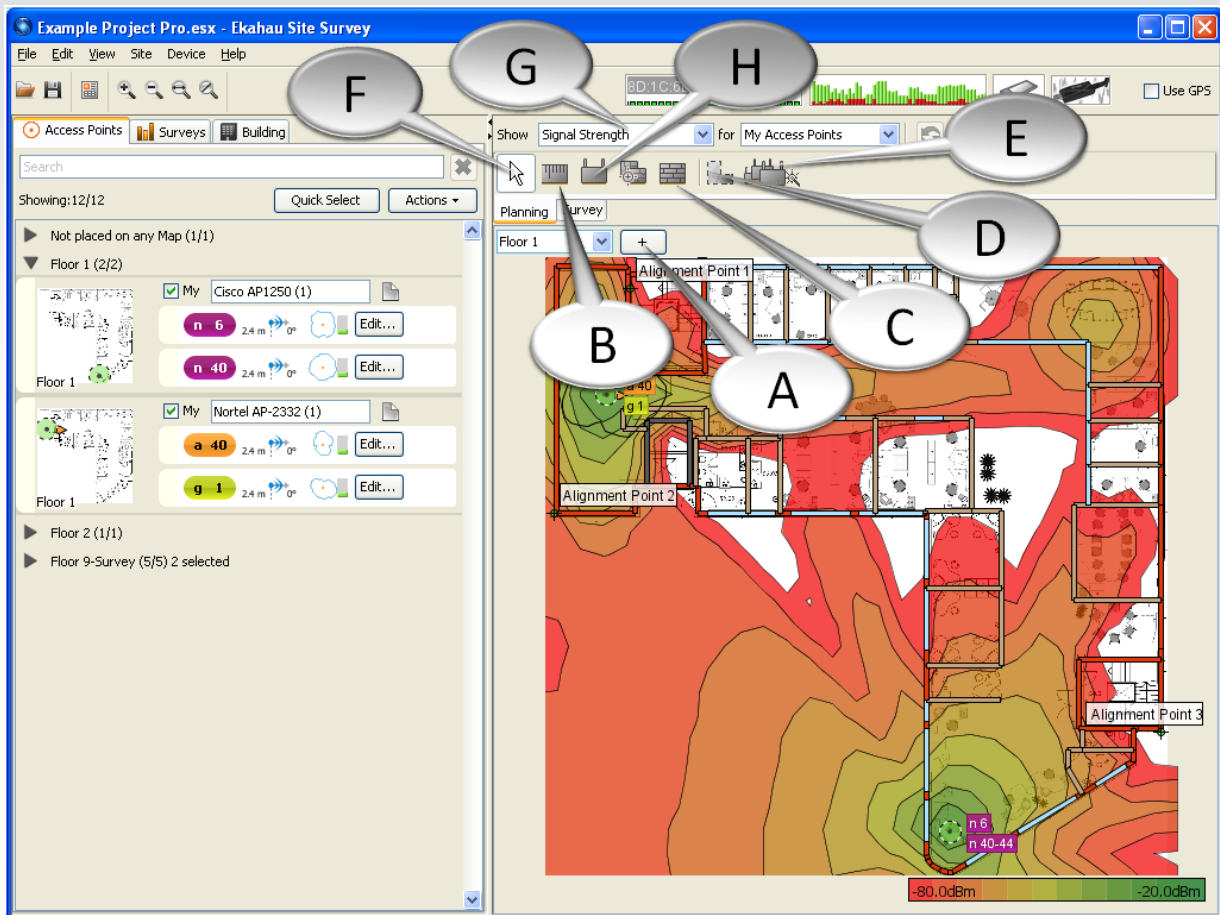


- A. Quickly select a group of APs
- B. Choose visualization
- C. Choose APs to visualize
- D. Select & deselect access points
- E. Switch between maps

F. These work together: If "...for Selected Access Points" is active, the APs selected in the AP list (or map) will be used for the visualization

Start from the Scratch: Design a Wi-Fi Network

1. Create a new Project: File > New Project
 2. Go to the Planning tab
 3. Insert a map (A), set scale (B)
 4. Draw main walls (C)
 5. Draw Coverage Areas (D)
 6. Click Auto-Planner, configure settings (E). Auto-Planner will suggest AP locations and channels.
 7. Optimize the AP locations if needed (Edit tool, F)
 8. Analyze the network (G)
- [Instead of using Auto-Planner (steps 6-7), you can place and configure APs manually, H]



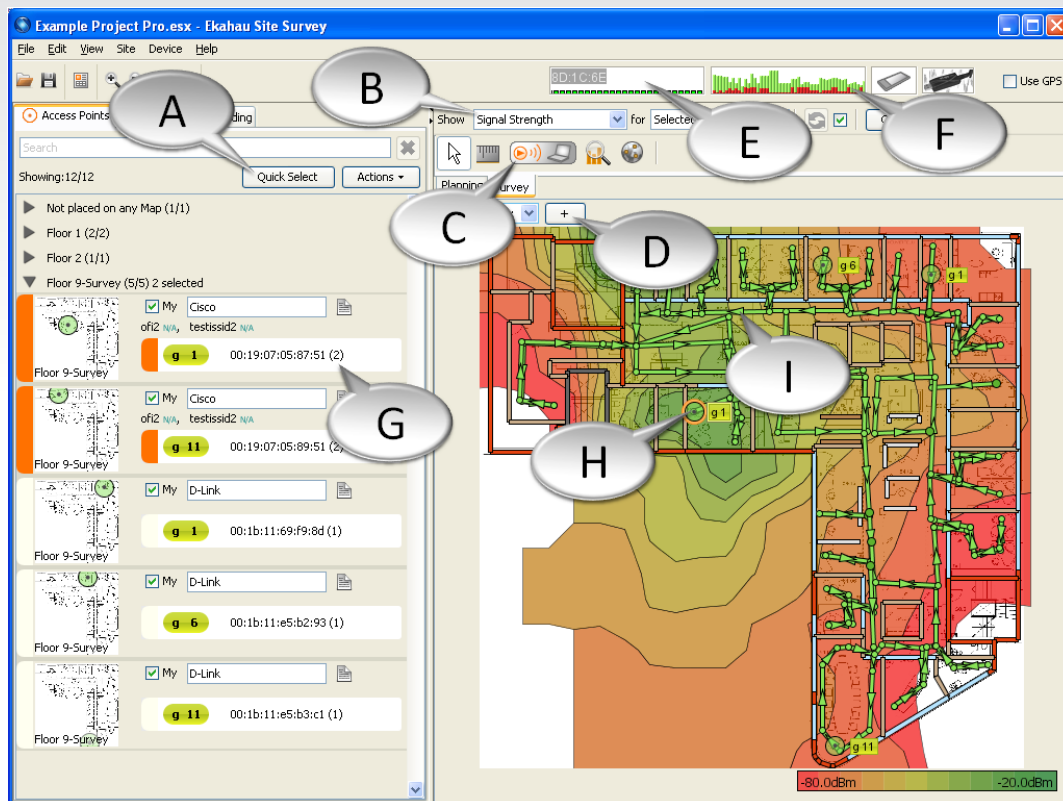
- A. Add Map
- B. Scale Tool
- C. Wall Tool
- D. Coverage Area Tool

- E. Open Auto-Planner
- F. Edit Tool: Move APs, walls, etc.
- G. Select Visualization Type
- H. Place Access Points Manually

Start from the Scratch: Perform Site Surveys

1. Create a new Project: File > New Project
2. Insert a map (D), set scale
3. Go to the Survey tab
4. Click the Record button (C), click on the map as you start or stop walking or make a turn
5. Right click when you want to pause or stop surveying
6. Visualize the data (B) for all or APs
7. Use the Network Health and Network Issues visualizations to ensure performance and troubleshoot.
Go to Site > Edit Requirements to edit your requirements.

Note: Drawing walls is **not** required if you're just performing surveys and not working with simulated access points.



- A. Quickly select a group of APs
- B. Choose Visualization
- C. Record Site Survey
- D. Add a map (jpeg, png, bmp, gif)
- E. Click the Miniature Ping View to edit / configure Ping host used for Active Survey
- F. Ensure your network adapters are connected and signals are updating before surveying

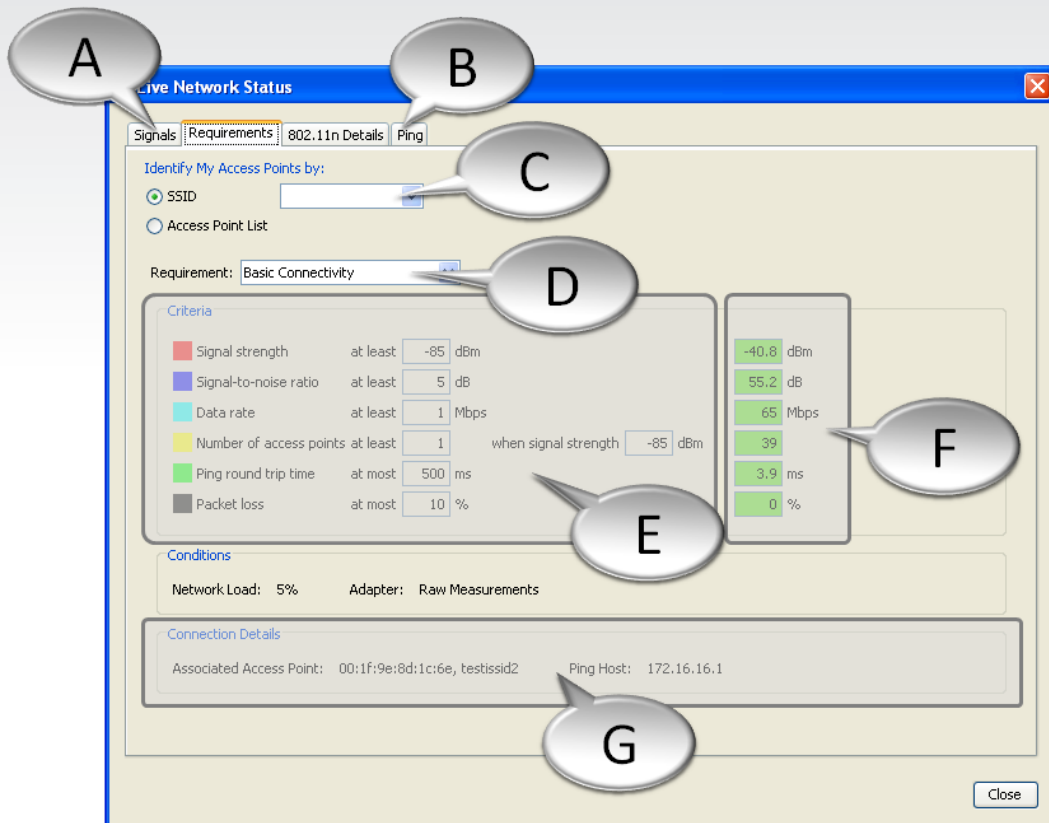
- G. Measured APs look different from simulated APs. This AP is distributing two SSIDs.
- H. This is what an AP looks like on the map. It's an 802.11g AP (yellowish color) on channel 1. Click to select.
- I. This is the survey route

Troubleshoot an Existing Network Without Site Surveys

1. Ensure a supported Wi-Fi adapter is connected and enabled
2. Select your network requirements (such as data, VoIP) from : Site > Requirements
3. Click on the Miniature Signal Strength or Miniature Ping View button (the green bars that are updating in the top-right corner of the screen)
4. If you have not performed surveys and defined My Access Points, select the SSID of your network

from the drop-down menu

5. Use the Live Network Status view to discover basic network problems. Live Network Status will continually compare the current network signals with your requirements, and will show if problems in your Wi-Fi are detected.



- A. Select the Signals tab to view the list of audible APs. The ones currently not audible are grayed out**
- B. Select the Ping tab to start / stop pinging and to edit the ping settings**
- C. If you are troubleshooting using an empty Project, select your SSID here**
- D. Select one of the pre-defined requirements suitable for your case**

- E. Your current network requirements. Adjust from: Site > Requirements. Here the network is designed for Basic Connectivity**
- F. Does your network currently meet your Requirements? Green = Yes, Red = No**
- G. Current host being pinged and the associated Access Point**